

INTERIOR
5,058 SF

EXTERIOR
1,065 SF

4 BEDROOMS
5.5 BATHROOMS
FAMILY ROOM
WINDOWED SERVICE ROOM

INTERIOR
3,872 SF

EXTERIOR
525 SF

3 BEDROOMS
4.5 BATHROOMS
DEN
SERVICE ROOM

INTERIOR
3,872 SF

EXTERIOR
525 SF

3 BEDROOMS
4.5 BATHROOMS
DEN
SERVICE ROOM

INTERIOR
4,428 SF

EXTERIOR
710 SF

4 BEDROOMS
5.5 BATHROOMS
SERVICE ROOM

INTERIOR
3,976 SF

EXTERIOR
580 SF

3 BEDROOMS
4.5 BATHROOMS
SERVICE ROOM

INTERIOR
4,980 SF

EXTERIOR
880 SF

5 BEDROOMS
6.5 BATHROOMS
SERVICE ROOM



N 25° 45.8255



W 80° 8.4428

VILLA 01

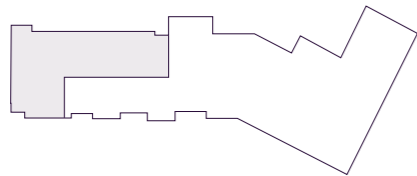
SITE PLAN

INTERIOR
8,835 SF

EXTERIOR
21,475 SF

*

- 5 BEDROOMS
- 7.5 BATHROOMS
- PRIVATE BAYFRONT YARD
- SUMMER KITCHEN
- FAMILY ROOM
- WINE ROOM
- STUDY
- FITNESS STUDIO
- PRIVATE GARAGE
- SERVICE SUITE

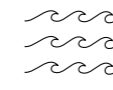
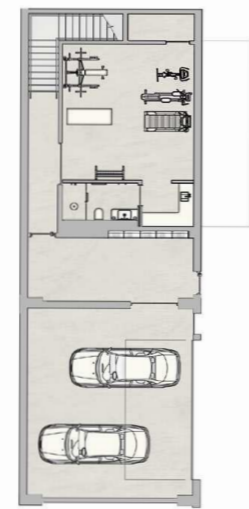


THE RESIDENCES

SIX FISHER ISLAND

⑥

The dimensions stated for this unit floor plan are approximate because there are various recognized methods for calculating the square footage of a unit. The square footage stated here is calculated from the exterior boundaries of the exterior walls to the centerline of interior demising walls without deductions for cutouts, curves, or architectural features. This method typically results in quoted dimensions greater than the dimensions that would be determined by using other accepted methods. The definition of "Unit" and the calculation method to be relied upon is set forth by the Developer in Developer's prospectus and the method set forth in the Developer's prospectus may result in a square footage calculation less than the method used here. Consult the Developer's prospectus to learn Unit dimensions and what is offered with the Unit. Dimensions and unit configuration is not guaranteed and may change during construction. Depictions of furnishings, fixtures and other items of personal property are not included with purchase.



N 25° 45.8255



W 80° 8.4428

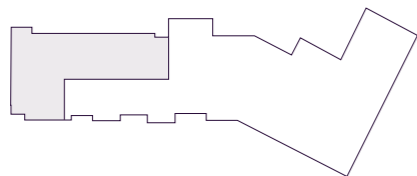
VILLA 01

INTERIOR
8,835 SF

EXTERIOR
21,475 SF

*

- 5 BEDROOMS
- 7.5 BATHROOMS
- PRIVATE BAYFRONT YARD
- SUMMER KITCHEN
- FAMILY ROOM
- WINE ROOM
- STUDY
- FITNESS STUDIO
- PRIVATE GARAGE
- SERVICE SUITE

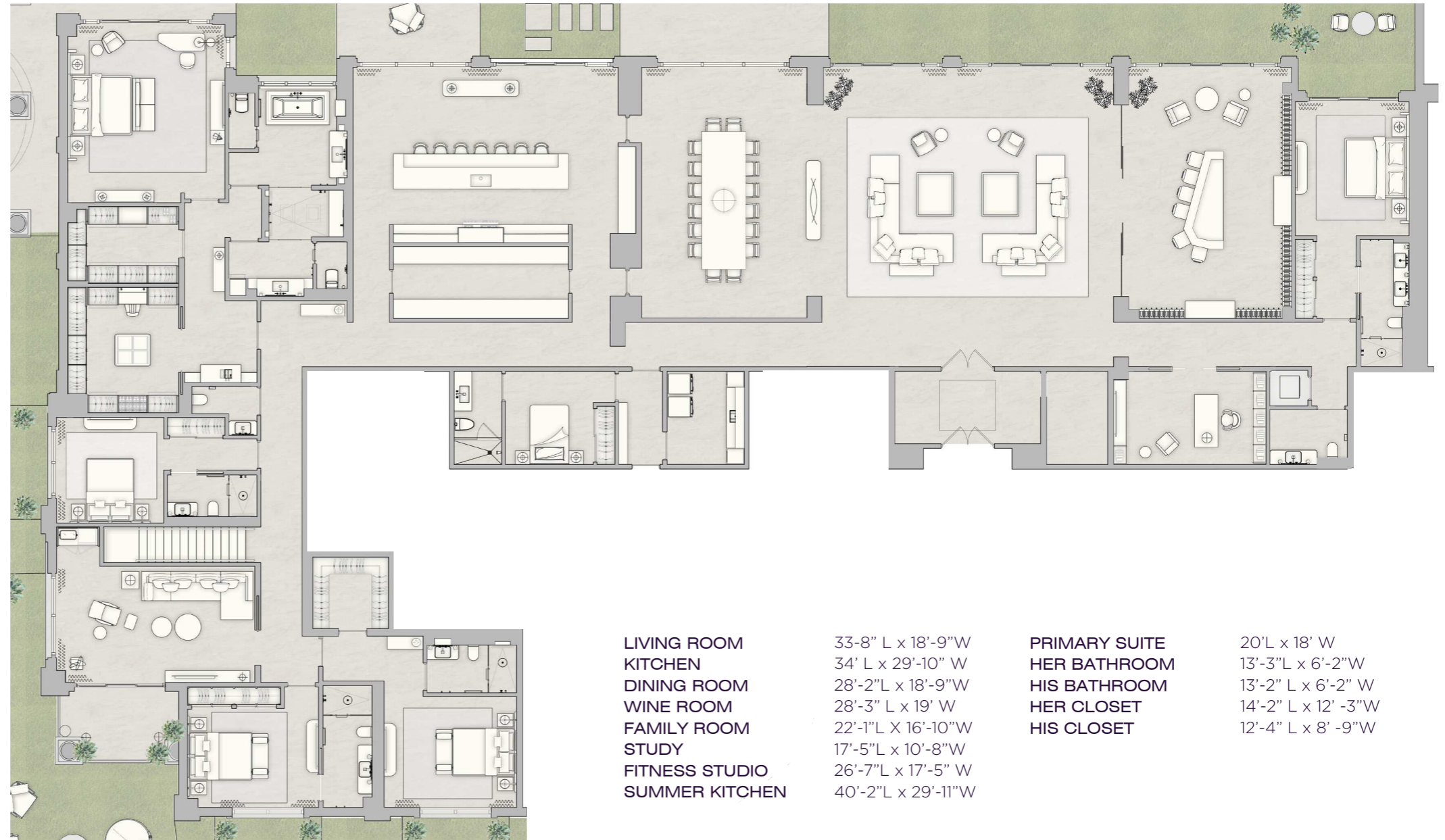


THE RESIDENCES

SIX FISHER ISLAND

⑥

The dimensions stated for this unit floor plan are approximate because there are various recognized methods for calculating the square footage of a unit. The square footage stated here is calculated from the exterior boundaries of the exterior walls to the centerline of interior demising walls without deductions for cutouts, curves, or architectural features. This method typically results in quoted dimensions greater than the dimensions that would be determined by using other accepted methods. The definition of "line" and the calculation method to be relied upon is set forth by the Developer in Developer's prospectus and the method set forth in the Developer's prospectus may result in a square footage calculation less than the method used here. Consult the Developer's prospectus to learn Unit dimensions and what is offered with the Unit. Dimensions and unit configuration is not guaranteed and may change during construction. Depictions of furnishings, fixtures and other items of personal property are not included with purchase.



LIVING ROOM 33'-8" L x 18'-9" W
 KITCHEN 34' L x 29'-10" W
 DINING ROOM 28'-2" L x 18'-9" W
 WINE ROOM 28'-3" L x 19' W
 FAMILY ROOM 22'-1" L x 16'-10" W
 STUDY 17'-5" L x 10'-8" W
 FITNESS STUDIO 26'-7" L x 17'-5" W
 SUMMER KITCHEN 40'-2" L x 29'-11" W

PRIMARY SUITE 20' L x 18' W
 HER BATHROOM 13'-3" L x 6'-2" W
 HIS BATHROOM 13'-2" L x 6'-2" W
 HER CLOSET 14'-2" L x 12' -3" W
 HIS CLOSET 12'-4" L x 8' -9" W

N 25° 45.8255



W 80° 8.4428

RESIDENCE 02

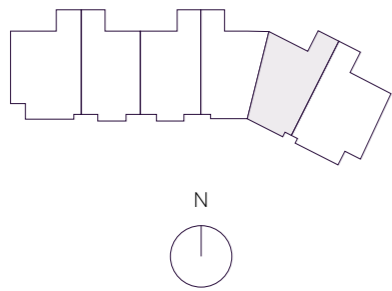
INTERIOR	EXTERIOR
3,976 F ²	580 F ²
369 M ²	53 M ²

TOTAL
4,556 F²
422 M²

*

3 BEDROOMS
4 BATHROOMS
1 POWDER ROOM
FAMILY ROOM
SERVICE SUITE

OCEAN VIEW



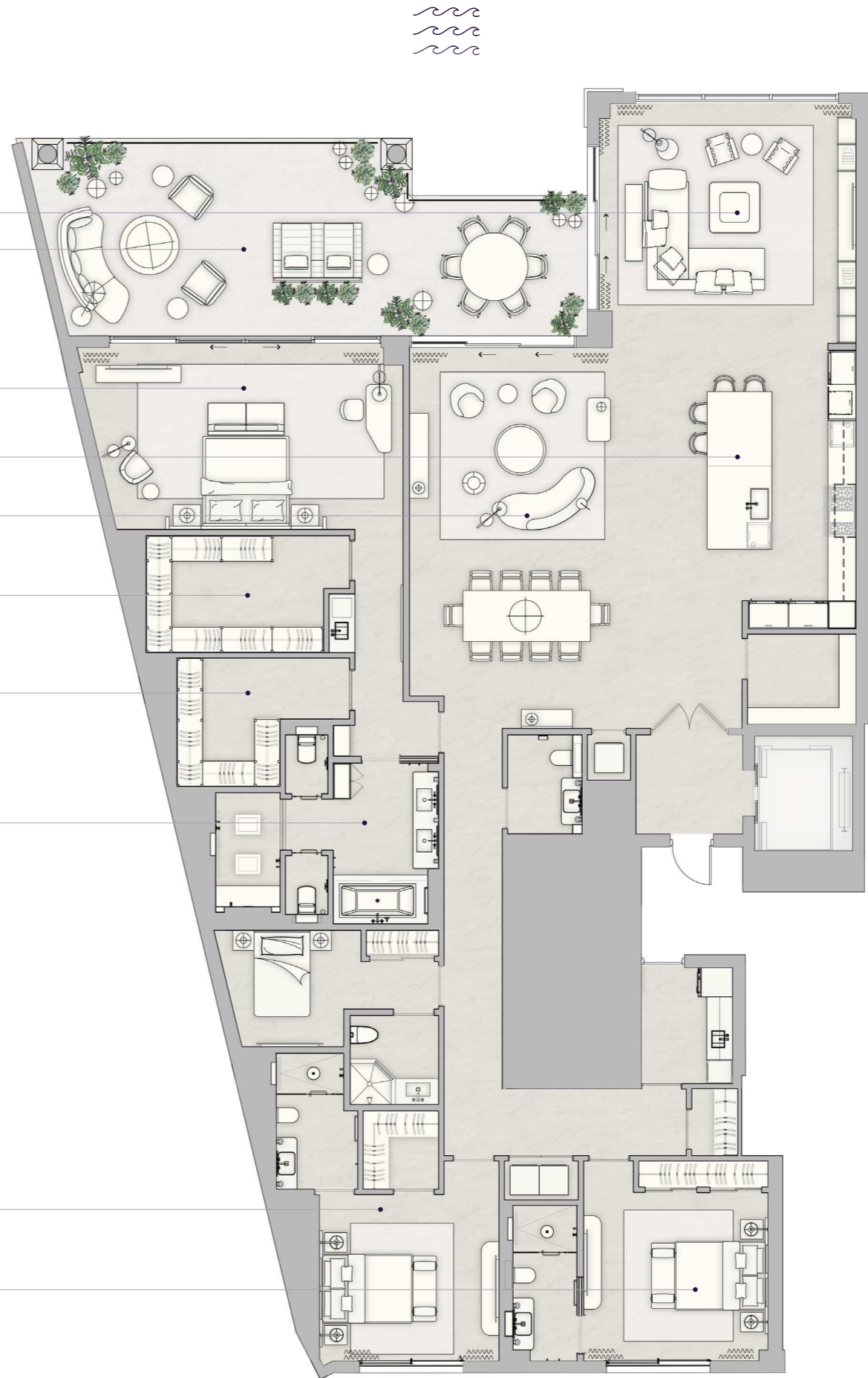
THE RESIDENCES

SIX FISHER ISLAND

⑥

The dimensions stated for this unit floor plan are approximate because there are various recognized methods for calculating the square footage of a unit. The square footage stated here is calculated from the exterior boundaries of the exterior walls to the centerline of interior demising walls without deductions for cutouts, curves, or architectural features. This method typically results in quoted dimensions greater than the dimensions that would be determined by using other accepted methods. The definition of "Unit" and the calculation method to be relied upon is set forth by the Developer in Developer's prospectus and the method set forth in the Developer's prospectus may result in a square footage calculation less than the method used here. Consult the Developer's prospectus to learn Unit dimensions and what is offered with the Unit. Dimensions and unit configuration is not guaranteed and may change during construction. Depictions of furnishings, fixtures and other items of personal property are not included with purchase.

- FAMILY ROOM
18'-8" x 20'
- BALCONY
16'-6" x 43'-3"
- PRIMARY BEDROOM
14'-1" x 23'-6"
- KITCHEN
21'-6" x 11'-6"
- LIVING ROOM
30'-7" x 14'-6"
- HER WARDROBE
9' x 13'-8"
- HIS WARDROBE
9'-11" x 13'-4"
- PRIMARY BATHROOM
15'-4" x 17'-3"
- BEDROOM 2
13' x 14'-8"
- BEDROOM 3
13'-6" x 14'-5"



N 25° 45.8255



W 80° 8.4428

RESIDENCE 02C

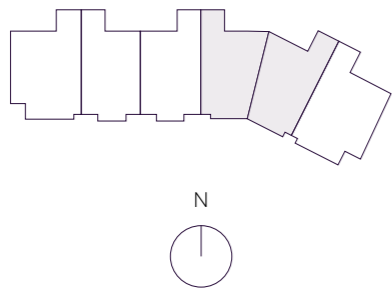
INTERIOR	EXTERIOR
8,404 F ²	1,290 F ²
780 M ²	119 M ²

TOTAL
9,694 F²
899 M²

*

- 6 BEDROOMS
- 7 BATHROOMS
- 1 POWDER ROOM
- FAMILY ROOM
- EXERCISE ROOM
- OFFICE
- WINE ROOM
- SERVICE SUITE

OCEAN VIEW



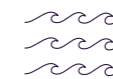
THE RESIDENCES

SIX FISHER ISLAND

⑥

The dimensions stated for this unit floor plan are approximate because there are various recognized methods for calculating the square footage of a unit. The square footage stated here is calculated from the exterior boundaries of the exterior walls to the centerline of interior demising walls without deductions for cutouts, curves, or architectural features. This method typically results in quoted dimensions greater than the dimensions that would be determined by using other accepted methods. The definition of "Unit" and the calculation method to be relied upon is set forth by the Developer in Developer's prospectus and the method set forth in the Developer's prospectus may result in a square footage calculation less than the method used here. Consult the Developer's prospectus to learn Unit dimensions and what is offered with the Unit. Dimensions and unit configuration is not guaranteed and may change during construction. Depictions of furnishings, fixtures and other items of personal property are not included with purchase.

- PRIMARY BEDROOM
23'-1" x 20'-1"
- BALCONY
15'-9" x 88'-10"
- HER BATHROOM
17'-7" x 14'-11"
- FAMILY ROOM
25'-11" x 20'-1"
- GREAT ROOM
29'-5" x 64'-5"
- HIS BATHROOM
12'-3" x 14'-9"
- HER WARDROBE
14'-10" x 18'-6"
- HIS WARDROBE
17'-5" x 14'-4"
- KITCHEN
16'-2" x 22'
- WINE ROOM
5'-3" x 15'-11"
- OFFICE
15'-7" x 10'-3"
- EXERCISE ROOM
10'-11" x 28'-11"
- BEDROOM 2
13'-6" x 14'-5"
- BEDROOM 3
14'-6" x 14'-8"
- BEDROOM 4
13' x 14'-5"
- BEDROOM 5
12' x 13'-10"
- BALCONY
8'-6" x 17'-2"
- BEDROOM 6
17'-9" x 15'-8"



N 25° 45.8255



W 80° 8.4428

RESIDENCE 03

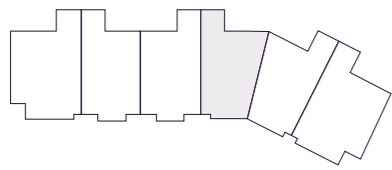
INTERIOR	EXTERIOR
4,428 F ²	710 F ²
411 M ²	65 M ²

TOTAL
5,138 F²
476 M²

*

- 4 BEDROOMS
- 5 BATHROOMS
- 1 POWDER ROOM
- FAMILY ROOM
- SERVICE SUITE

OCEAN VIEW



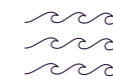
THE RESIDENCES

SIX FISHER ISLAND

⑥

The dimensions stated for this unit floor plan are approximate because there are various recognized methods for calculating the square footage of a unit. The square footage stated here is calculated from the exterior boundaries of the exterior walls to the centerline of interior demising walls without deductions for cutouts, curves, or architectural features. This method typically results in quoted dimensions greater than the dimensions that would be determined by using other accepted methods. The definition of "Unit" and the calculation method to be relied upon is set forth by the Developer in Developer's prospectus and the method set forth in the Developer's prospectus may result in a square footage calculation less than the method used here. Consult the Developer's prospectus to learn Unit dimensions and what is offered with the Unit. Dimensions and unit configuration is not guaranteed and may change during construction. Depictions of furnishings, fixtures and other items of personal property are not included with purchase.

- BALCONY
15'-4" x 43'-3"
- FAMILY ROOM
16'-10" x 20'-1"
- PRIMARY BEDROOM
15'-2" x 22'-10"
- KITCHEN
21'-1" x 11'-6"
- LIVING ROOM
29'-5" x 15'-4"
- HER WARDROBE
14'-6" x 9'
- HIS WARDROBE
12'-5" x 9'-10"
- PRIMARY BATHROOM
15'-4" x 17'-3"
- BEDROOM 2
17'-9" x 15'-9"
- BEDROOM 3
13' x 14'-5"
- BEDROOM 4
12' x 13'-10"
- BALCONY
8'-6" x 17'-2"



N 25° 45.8255



W 80° 8.4428

RESIDENCE 04

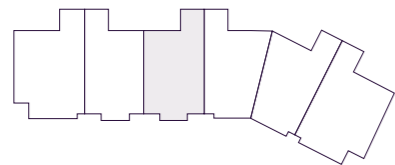
INTERIOR	EXTERIOR
3,872 F ²	525 F ²
359 M ²	48 M ²

TOTAL
4,397 F²
407 M²

*

3 BEDROOMS
4.5 BATHROOMS
FAMILY ROOM
SERVICE ROOM
DEN

OCEAN VIEW



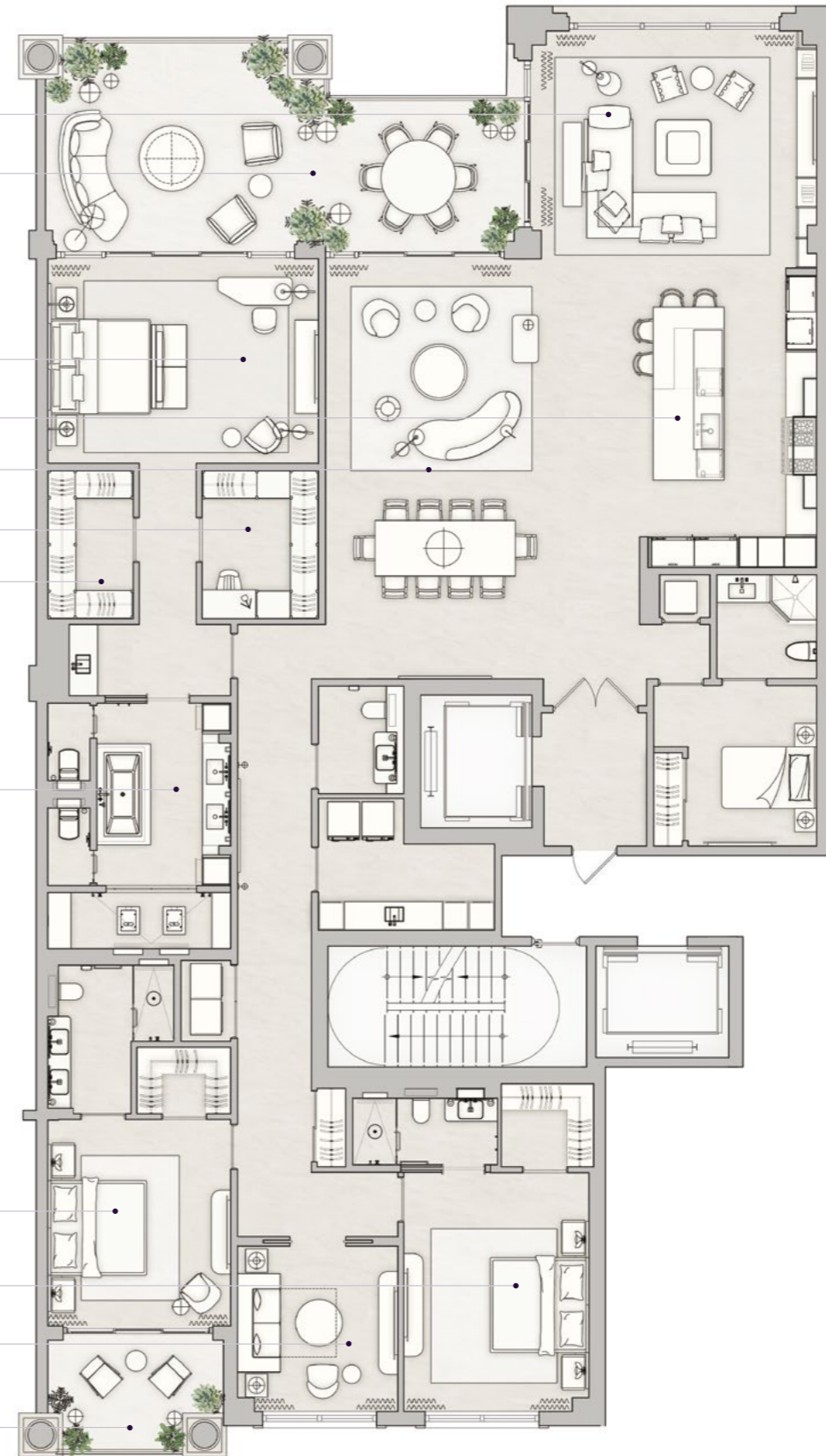
THE RESIDENCES

SIX FISHER ISLAND

⑥

The dimensions stated for this unit floor plan are approximate because there are various recognized methods for calculating the square footage of a unit. The square footage stated here is calculated from the exterior boundaries of the exterior walls to the centerline of interior demising walls without deductions for cutouts, curves, or architectural features. This method typically results in quoted dimensions greater than the dimensions that would be determined by using other accepted methods. The definition of "Unit" and the calculation method to be relied upon is set forth by the Developer in Developer's prospectus and the method set forth in the Developer's prospectus may result in a square footage calculation less than the method used here. Consult the Developer's prospectus to learn Unit dimensions and what is offered with the Unit. Dimensions and unit configuration is not guaranteed and may change during construction. Depictions of furnishings, fixtures and other items of personal property are not included with purchase.

- FAMILY ROOM
16'-9" x 20'-1"
- BALCONY
15' x 33'-7"
- PRIMARY BEDROOM
14'-7" x 19"
- KITCHEN
21'-1" x 12'-5"
- LIVING ROOM
29'-5" x 15'-2"
- HER CLOSET
10'-5" x 8'-2"
- HIS CLOSET
10'-5" x 6'
- PRIMARY BATHROOM
14'-7" x 19"
- BEDROOM 2
14'-8" x 12'-10"
- BEDROOM 3
16'-9" x 13'
- DEN
11'-7" x 11'-3"
- BALCONY
8'-6" x 12'-4"



N 25° 45.8255



W 80° 8.4428

RESIDENCE 04C

INTERIOR 7,744 F²
719 M²

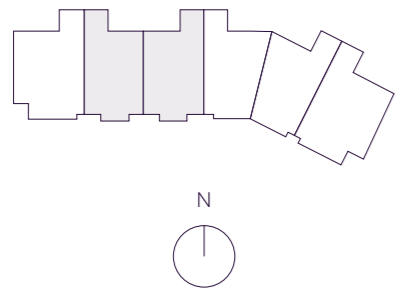
EXTERIOR 1,050 F²
97 M²

TOTAL 8,794 F²
816 M²

*

- 5 BEDROOMS
- 6 BATHROOMS
- 2 POWDER ROOMS
- FAMILY ROOM
- SERVICE SUITE
- WINE ROOM
- EXERCISE ROOM
- DEN

OCEAN VIEW

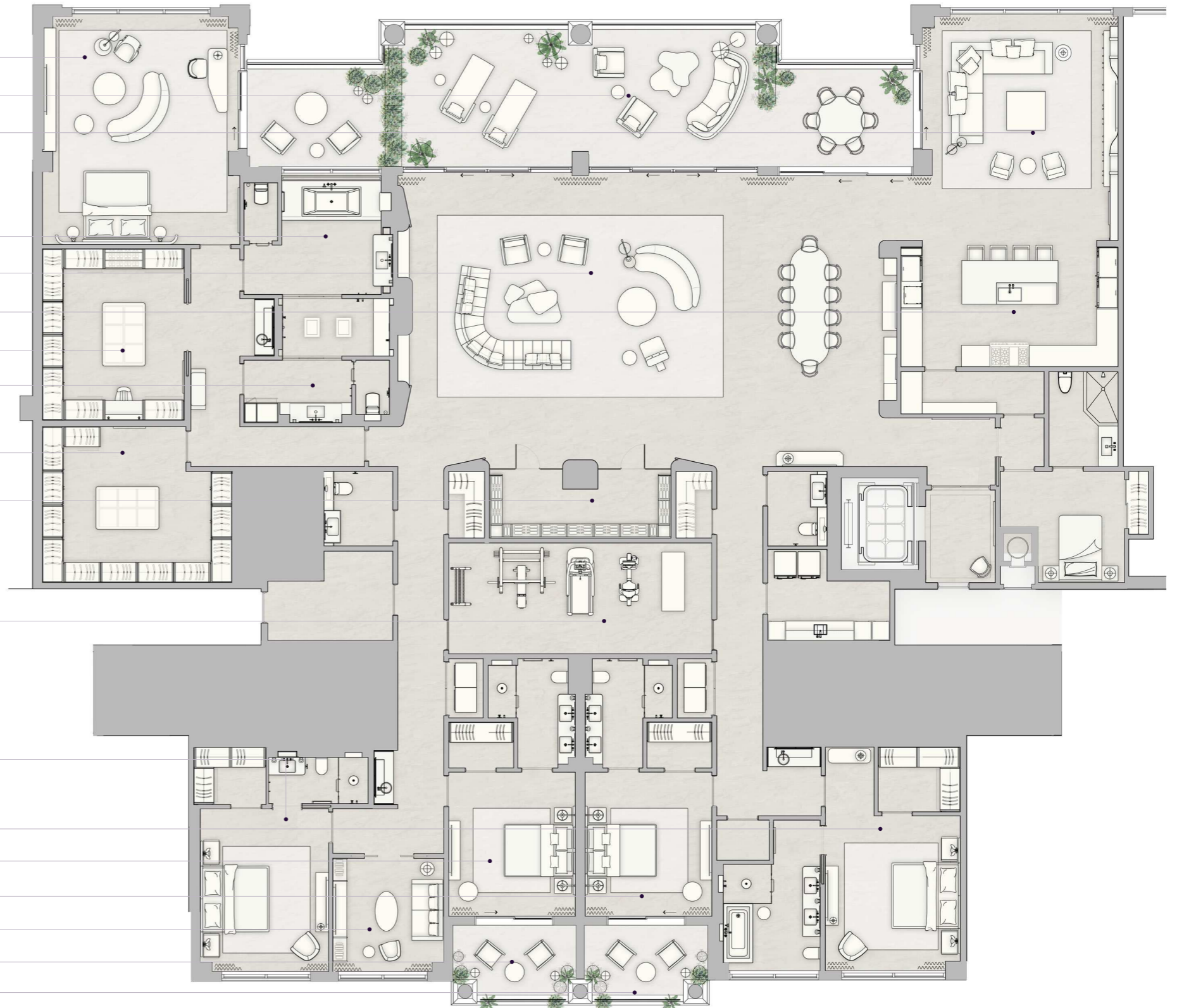


THE RESIDENCES

SIX FISHER ISLAND

⑥

- PRIMARY BEDROOM 23'-1" x 19'-4"
- BALCONY 15' x 67'-11"
- FAMILY ROOM 22'-8" x 19'
- HER BATHROOM 18'-5" x 15'-1"
- GREAT ROOM 29'-7" x 50'-7"
- KITCHEN 12'-10" x 17'-8"
- HER WARDROBE 17'-5" x 14'-4"
- HIS BATHROOM 12'-6" x 14'-9"
- HIS WARDROBE 14'-10" x 19'-8"
- WINE ROOM 6'-3" x 14'-5"
- EXERCISE ROOM 12'-3" x 26'-8"
- BEDROOM 2 16'-1" x 13'-8"
- BEDROOM 3 14'-8" x 12'-10"
- BEDROOM 4 14'-8" x 12'-10"
- BEDROOM 5 16'-9" x 13'
- DEN 11'-9" x 11'-3"
- BALCONY 8'-6" x 12'-4"
- BALCONY 8'-6" x 12'-4"



The dimensions stated for this unit floor plan are approximate because there are various recognized methods for calculating the square footage of a unit. The square footage stated here is calculated from the exterior boundaries of the exterior walls to the centerline of interior demising walls without deductions for cutouts, curves, or architectural features. This method typically results in quoted dimensions greater than the dimensions that would be determined by using other accepted methods. The definition of "Unit" and the calculation method to be relied upon is set forth by the Developer in Developer's prospectus and the method set forth in the Developer's prospectus may result in a square footage calculation less than the method used here. Consult the Developer's prospectus to learn Unit dimensions and what is offered with the Unit. Dimensions and unit configuration is not guaranteed and may change during construction. Depictions of furnishings, fixtures and other items of personal property are not included with purchase.

N 25° 45.8255



*

W 80° 8.4428

RESIDENCE 05

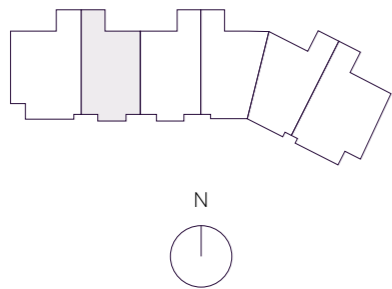
INTERIOR EXTERIOR
 3,872 F² 525 F²
 359 M² 48 M²

TOTAL
 4,397 F²
 407 M²

*

- 3 BEDROOMS
- 4 BATHROOMS
- 1 POWDER ROOM
- FAMILY ROOM
- SERVICE SUITE
- DEN

OCEAN VIEW



THE RESIDENCES

SIX FISHER ISLAND

⑥

The dimensions stated for this unit floor plan are approximate because there are various recognized methods for calculating the square footage of a unit. The square footage stated here is calculated from the exterior boundaries of the exterior walls to the centerline of interior demising walls without deductions for cutouts, curves, or architectural features. This method typically results in quoted dimensions greater than the dimensions that would be determined by using other accepted methods. The definition of "Unit" and the calculation method to be relied upon is set forth by the Developer in Developer's prospectus and the method set forth in the Developer's prospectus may result in a square footage calculation less than the method used here. Consult the Developer's prospectus to learn Unit dimensions and what is offered with the Unit. Dimensions and unit configuration is not guaranteed and may change during construction. Depictions of furnishings, fixtures and other items of personal property are not included with purchase.

FAMILY ROOM
 16'-9" x 20'-1"

BALCONY
 15' x 33'-7"

PRIMARY BEDROOM
 14'-7" x 19"

KITCHEN
 21'-1" x 12'-5"

LIVING ROOM
 29'-5" x 15'-2"

HER CLOSET
 10'-5" x 8'-2"

HIS CLOSET
 10'-5" x 6'

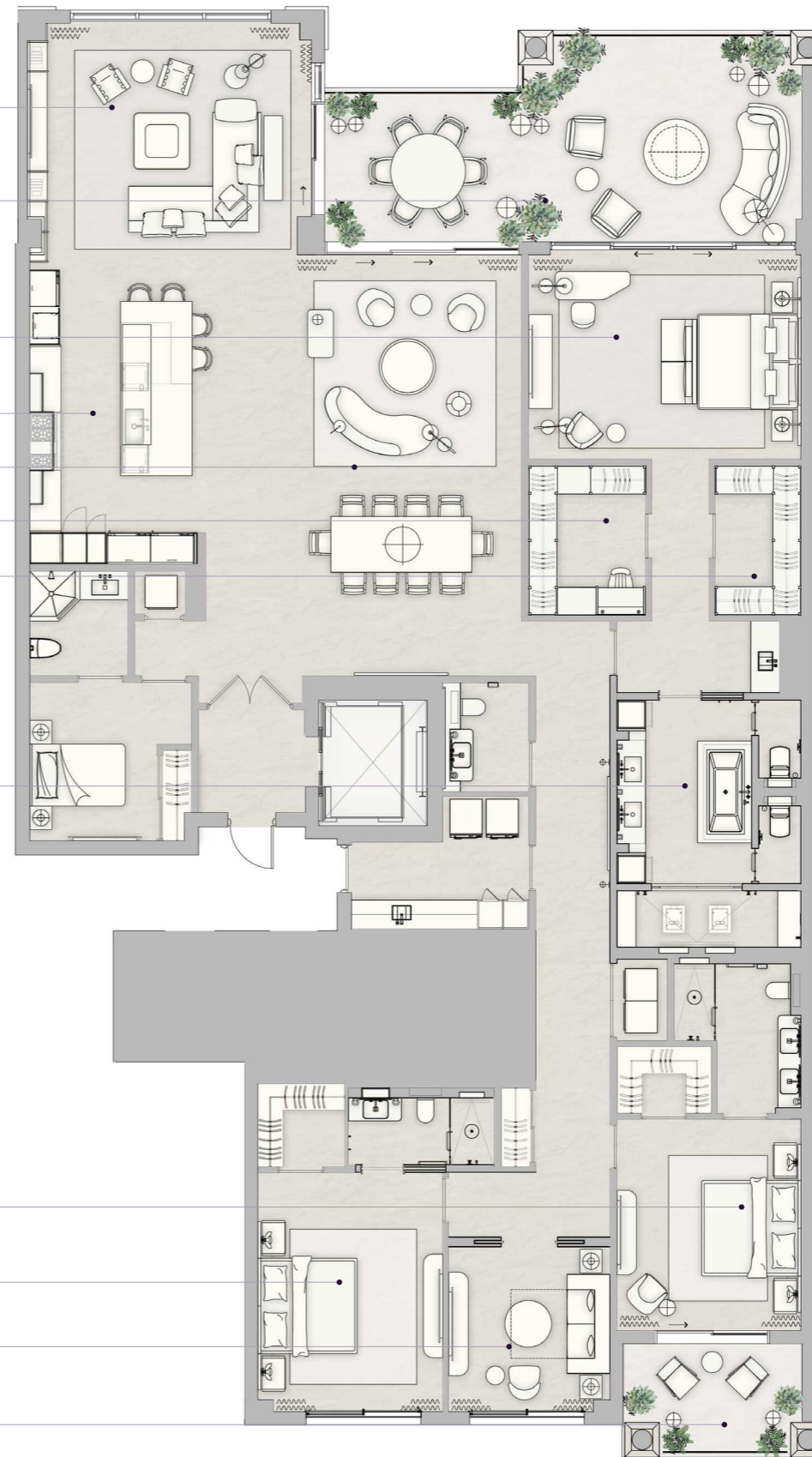
PRIMARY BATHROOM
 14'-7" x 19"

BEDROOM 2
 16'-9" x 13'

BEDROOM 3
 14'-8" x 12'-10"

DEN
 11'-7" x 11'-3"

BALCONY
 8'-6" x 12'-4"



N 25° 45.8255



*

W 80° 8.4428

RESIDENCE 05C

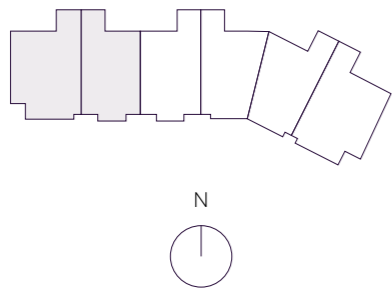
INTERIOR	EXTERIOR
8,930 F ²	1,590 F ²
829.62 M ²	147.72 M ²

TOTAL
10,520 F²
977.34 M²

*

- 6 BEDROOMS
- 8 BATHROOMS
- 2 POWDER ROOMS
- FAMILY ROOM
- LIBRARY
- OFFICE
- SERVICE SUITE
- WINE ROOM
- EXERCISE ROOM

OCEAN VIEW



THE RESIDENCES

SIX FISHER ISLAND

⑥

The dimensions stated for this unit floor plan are approximate because there are various recognized methods for calculating the square footage of a unit. The square footage stated here is calculated from the exterior boundaries of the exterior walls to the centerline of interior demising walls without deductions for cutouts, curves, or architectural features. This method typically results in quoted dimensions greater than the dimensions that would be determined by using other accepted methods. The definition of "Unit" and the calculation method to be relied upon is set forth by the Developer in Developer's prospectus and the method set forth in the Developer's prospectus may result in a square footage calculation less than the method used here. Consult the Developer's prospectus to learn Unit dimensions and what is offered with the Unit. Dimensions and unit configuration is not guaranteed and may change during construction. Depictions of furnishings, fixtures and other items of personal property are not included with purchase.

- BALCONY
100'-9" x 14'-8"
- FAMILY ROOM
22' x 18'
- BALCONY
15' x 33'-7"
- PRIMARY BEDROOM
17'-7" x 20'
- GREAT ROOM
52'-5" x 29'-7"
- HER BATHROOM
13'-3" x 11'
- KITCHEN
20' x 27'-4"
- EXERCISE ROOM
13'-11" x 27'-5"
- HIS BATHROOM
13'-3" x 11'
- HER WARDROBE
12'-8" x 11'-5"
- HIS WARDROBE
12'-6" x 11'-5"
- OFFICE
11'-5" x 12'-5"
- WINE ROOM
11'-4" x 11'-3"
- BEDROOM 2
24'-6" x 17'-4"
- BEDROOM 3
14'-8" x 13'-4"
- BEDROOM 4
14' x 12'
- BEDROOM 5
24'-6" x 17'-4"
- BEDROOM 6
14'-8" x 13'-4"



N 25° 45.8255



W 80° 8.4428

RESIDENCE 05D

LOWER LEVEL

INTERIOR	EXTERIOR
3,872 SF	525 SF
359 SM	48 SM

TOTAL AREA

INTERIOR	EXTERIOR
7,744 SF	1,050 SF
718 SM	96 SM

*

- 5 BEDROOMS
- 6 BATHROOMS
- 2 POWDER ROOMS
- FAMILY ROOM
- DEN
- OFFICE
- SERVICE SUITE
- GYM

● OCEAN VIEW



THE RESIDENCES
SIX FISHER ISLAND

The dimensions stated for this unit floor plan are approximate because there are various recognized methods for calculating the square footage of a unit. The square footage stated here is calculated from the exterior boundaries of the exterior walls to the centerline of interior-dwelling walls without deductions for columns, curbs, or architectural features. This method typically results in quoted dimensions greater than the dimensions that would be determined by using other accepted methods. The definition of "Unit" and the calculation method to be relied upon is set forth by the Developer in Developer's prospectus and the method set forth in the Developer's prospectus may result in a square footage calculation less than the method used here. Consult the Developer's prospectus to learn Unit dimensions and what is offered with the Unit. Dimensions and unit configuration is not guaranteed and may change during construction. Depictions of furnishings, fixtures and other items of personal property are not included with purchase.



N 25° 45' 8.255



W 80° 8.4428

RESIDENCE 05D

UPPER LEVEL

INTERIOR	EXTERIOR
3,872 SF	525 SF
359 SM	48 SM

TOTAL AREA

INTERIOR	EXTERIOR
7,744 SF	1,050 SF
718 SM	96 SM

*

- 5 BEDROOMS
- 6 BATHROOMS
- 2 POWDER ROOMS
- FAMILY ROOM
- DEN
- OFFICE
- SERVICE SUITE
- GYM

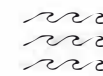
● OCEAN VIEW



THE RESIDENCES
SIX FISHER ISLAND

⑥

The dimensions stated for this unit floor plan are approximate because there are various recognized methods for calculating the square footage of a unit. The square footage stated here is calculated from the exterior boundaries of the interior walls to the centerline of interior dividing walls without deductions for columns, corners, or architectural features. This method typically results in quoted dimensions greater than the dimensions that would be determined by using other accepted methods. The distinction of "Unit" and the calculation method to be used upon is set forth by the Developer in the Developer's prospectus and the method set forth in the Developer's prospectus may result in a square footage calculation less than the method used here. Consult the Developer's prospectus to learn Unit dimensions and what is offered with the Unit. Dimensions and unit configurations is not guaranteed and may change during construction.



N 25° 45' 8.255



W 80° 8.4428

RESIDENCE 06

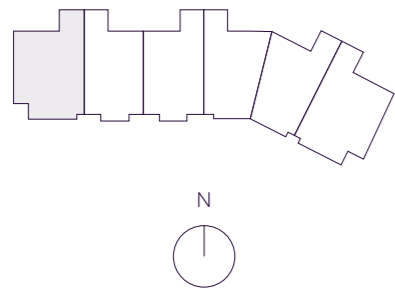
INTERIOR EXTERIOR
 5,058 F² 1,065 F²
 470 M² 98 M²

TOTAL
 6,123 F²
 568 M²

*

- 4 BEDROOMS
- 5 BATHROOMS
- 1 POWDER ROOM
- FAMILY ROOM
- WINDOWED SERVICE SUITE

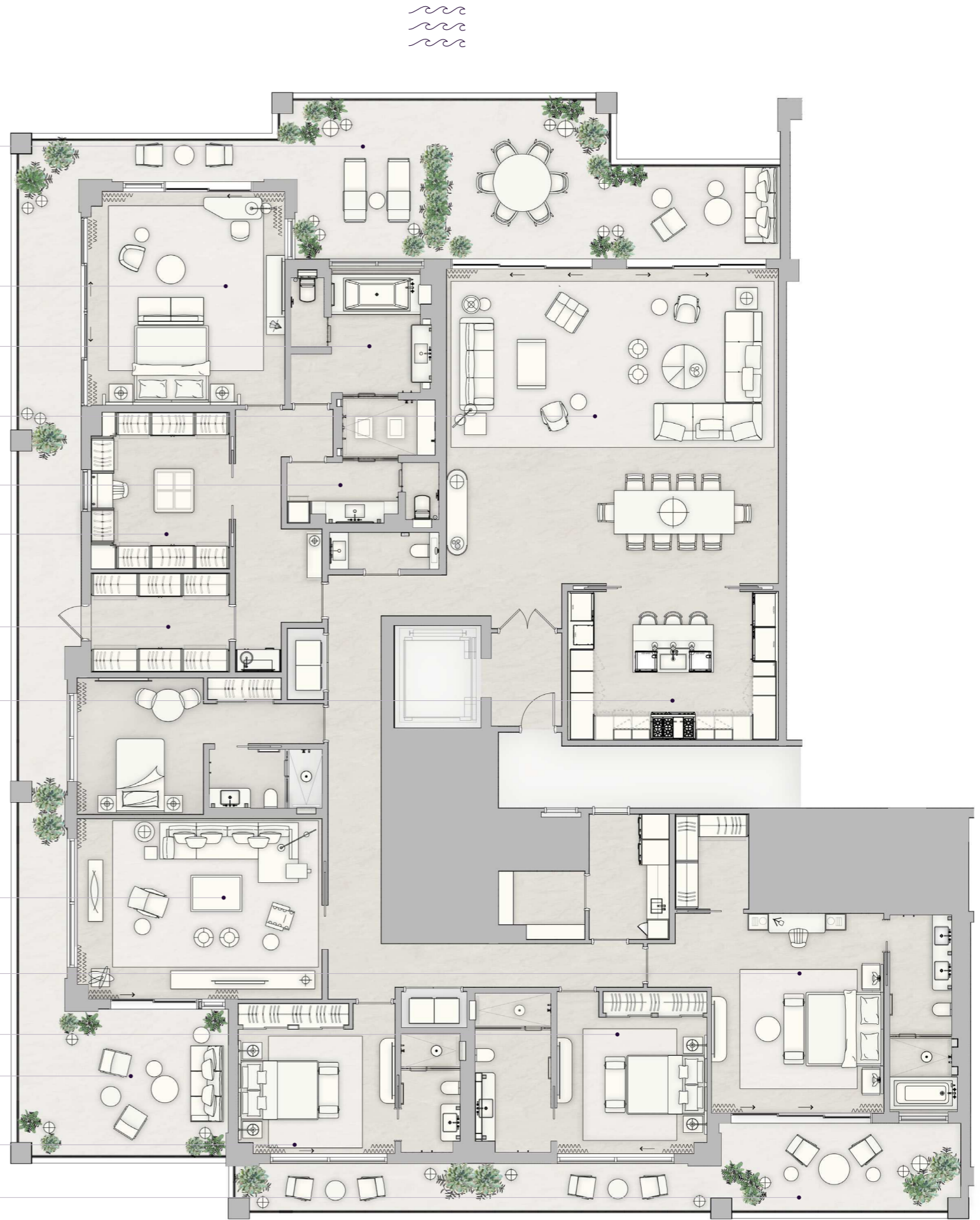
OCEAN VIEW



THE RESIDENCES
 SIX FISHER ISLAND
 ⑥

The dimensions stated for this unit floor plan are approximate because there are various recognized methods for calculating the square footage of a unit. The square footage stated here is calculated from the exterior boundaries of the exterior walls to the centerline of interior demising walls without deductions for cutouts, curves, or architectural features. This method typically results in quoted dimensions greater than the dimensions that would be determined by using other accepted methods. The definition of "line" and the calculation method to be relied upon is set forth by the Developer in Developer's prospectus and the method set forth in the Developer's prospectus may result in a square footage calculation less than the method used here. Consult the Developer's prospectus to learn Unit dimensions and what is offered with the Unit. Dimensions and unit configuration is not guaranteed and may change during construction. Depictions of furnishings, fixtures and other items of personal property are not included with purchase.

- BALCONY
15'-3" x 69'-5"
- PRIMARY BEDROOM
20'-3" x 17'-7"
- HER BATHROOM
17'-1" x 13'-3"
- LIVING ROOM
29'-2" x 30'-6"
- HIS BATHROOM
12'-1" x 13'-3"
- HER WARDROBE
14'-1" x 12'-5"
- HIS WARDROBE
8'-10" x 12'-5"
- KITCHEN
13'-6" x 19'-6"
- FAMILY ROOM
17'-0" x 22'-0"
- BEDROOM 2
18'-3" x 15'
- BEDROOM 3
12'-6" x 14'
- BALCONY
8'-6" x 13'-7"
- BEDROOM 4
11'-1" x 14'-8"
- BALCONY
8'-6" x 21'-0"



N 25° 45.8255



W 80° 8.4428

PENTHOUSE 01

MAIN LEVEL

INTERIOR TOTAL
15,570 SF

INTERIOR MAIN LEVEL
13,820 SF

EXTERIOR TOTAL
8,725 SF

EXTERIOR MAIN LEVEL
3,925 SF

*

8 BEDROOMS

9.5 BATHROOMS

PRIVATE ROOFTOP POOL DECK

POOL HOUSE WITH FULL KITCHEN

GUEST SUITE

SUMMER KITCHEN

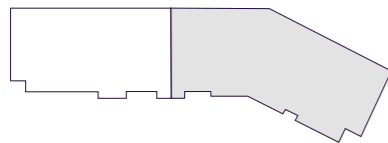
WINE ROOM

EXERCISE ROOM

SERVICE SUITE

GAME ROOM

THEATER



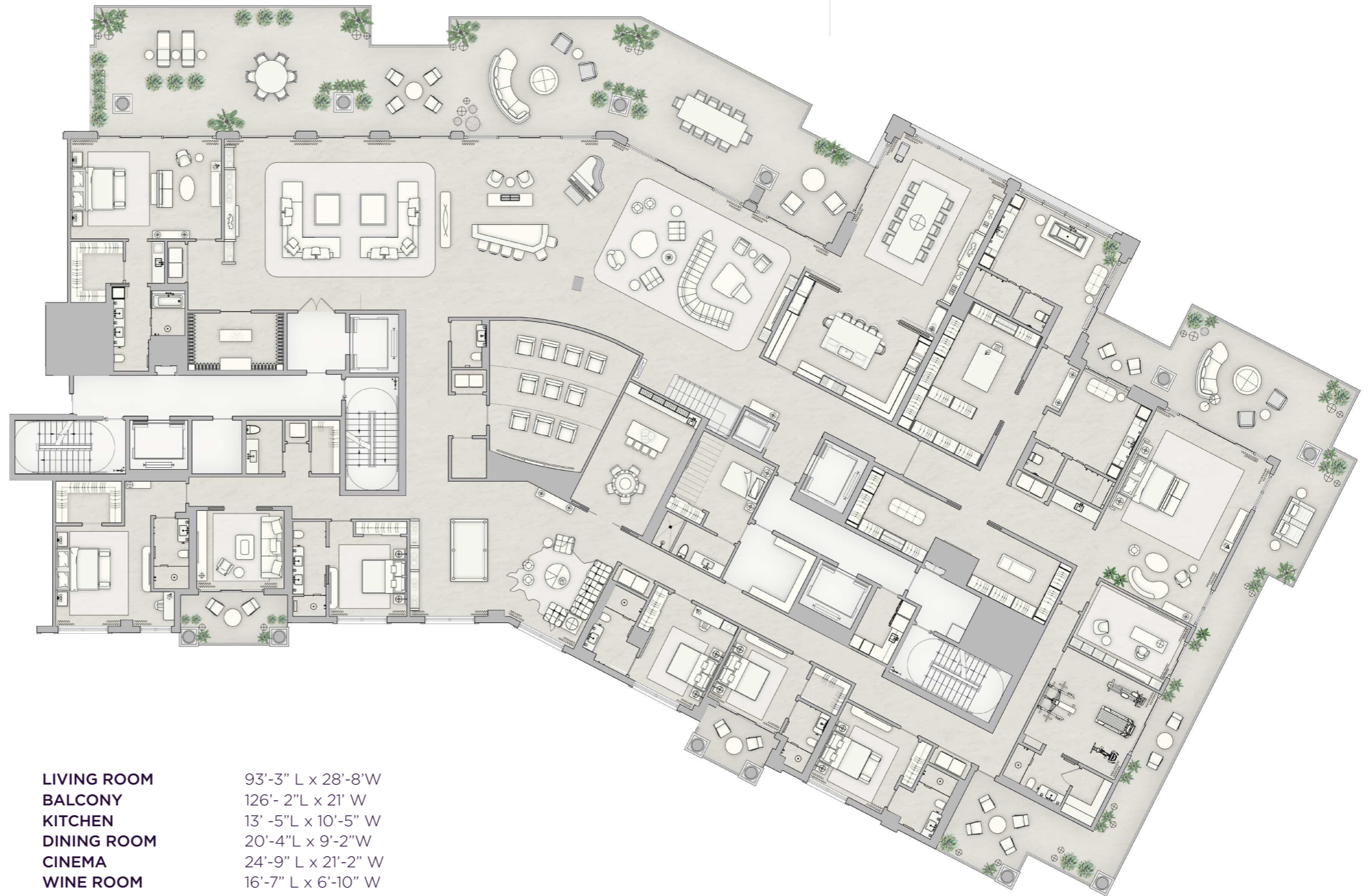
N



THE RESIDENCES

SIX FISHER ISLAND

⑥



LIVING ROOM 93'-3" L x 28'-8" W
BALCONY 126'-2" L x 21' W
KITCHEN 13'-5" L x 10'-5" W
DINING ROOM 20'-4" L x 9'-2" W
CINEMA 24'-9" L x 21'-2" W
WINE ROOM 16'-7" L x 6'-10" W
GAME ROOM 18'-1" L x 13' W
EXERCISE ROOM 15'-8" L x 15'-1" W
FAMILY ROOM 14' L x 12'-5" W

PRIMARY BEDROOM 28'-6" L x 20'-9" W
HER BATHROOM 19'-8" L x 18'-5" W
HIS BATHROOM 18'-8" L x 15' W
HER CLOSET 35'-9" L x 10'-1" W
HIS CLOSET 23' L x 14'-4" W

BEDROOM 2 26' L x 24'-5" W
BEDROOM 3 23'-1" L x 10'-4" W
BEDROOM 4 19' L x 15'-1" W
BEDROOM 5 21'-7" L x 15'-6" W
BEDROOM 6 19'-10" L x 12'-7" W
BEDROOM 7 22'-6" L x 13'-42" W

THE DIMENSIONS SHOWN FOR THIS UNIT, ROOM PLAN ARE APPROXIMATE BECAUSE THERE ARE VARIOUS RECOGNIZED METHODS FOR CALCULATING THE SQUARE FOOTAGE OF A UNIT. THE SQUARE FOOTAGE STATED HERE IS CALCULATED FROM THE EXTERIOR BOUNDARIES OF THE EXTERIOR WALLS TO THE CENTERLINE OF INTERIOR DEMISING WALLS WITHOUT DEDUCTIONS FOR CUTOUTS, CURVES, OR ARCHITECTURAL FEATURES. THIS METHOD TYPICALLY RESULTS IN QUOTED DIMENSIONS GREATER THAN THE DIMENSIONS THAT WOULD BE DETERMINED BY USING OTHER ACCEPTED METHODS. THE DEFINITION OF "UNIT" AND THE CALCULATION METHOD TO BE RELIED UPON IS SET FORTH BY THE DEVELOPER IN DEVELOPER'S PROSPECTUS AND THE METHOD SET FORTH IN THE DEVELOPER'S PROSPECTUS MAY RESULT IN A SQUARE FOOTAGE CALCULATION LESS THAN THE METHOD USED HERE. CONSULT THE DEVELOPER'S PROSPECTUS TO LEARN UNIT DIMENSIONS AND WHAT IS OFFERED WITH THE UNIT. DIMENSIONS AND UNIT CONFIGURATION IS NOT GUARANTEED AND MAY CHANGE DURING CONSTRUCTION. DEPICTIONS OF FURNISHINGS, FIXTURES AND OTHER ITEMS OF PERSONAL PROPERTY ARE NOT INCLUDED WITH PURCHASE.

N 25° 45.8255



W 80° 8.4428

ENTHOUSE 01

UPPER LEVEL

INTERIOR TOTAL
15,570 SF

INTERIOR UPPER LEVEL
1,750 SF

EXTERIOR TOTAL
8,725 SF

EXTERIOR UPPER LEVEL
4,800 SF

*

8 BEDROOMS

9.5 BATHROOMS

PRIVATE ROOFTOP POOL DECK

POOL HOUSE WITH FULL KITCHEN

GUEST SUITE

SUMMER KITCHEN

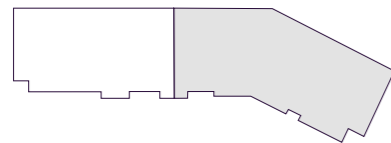
WINE ROOM

EXCERCISE ROOM

SERVICE SUITE

GAME ROOM

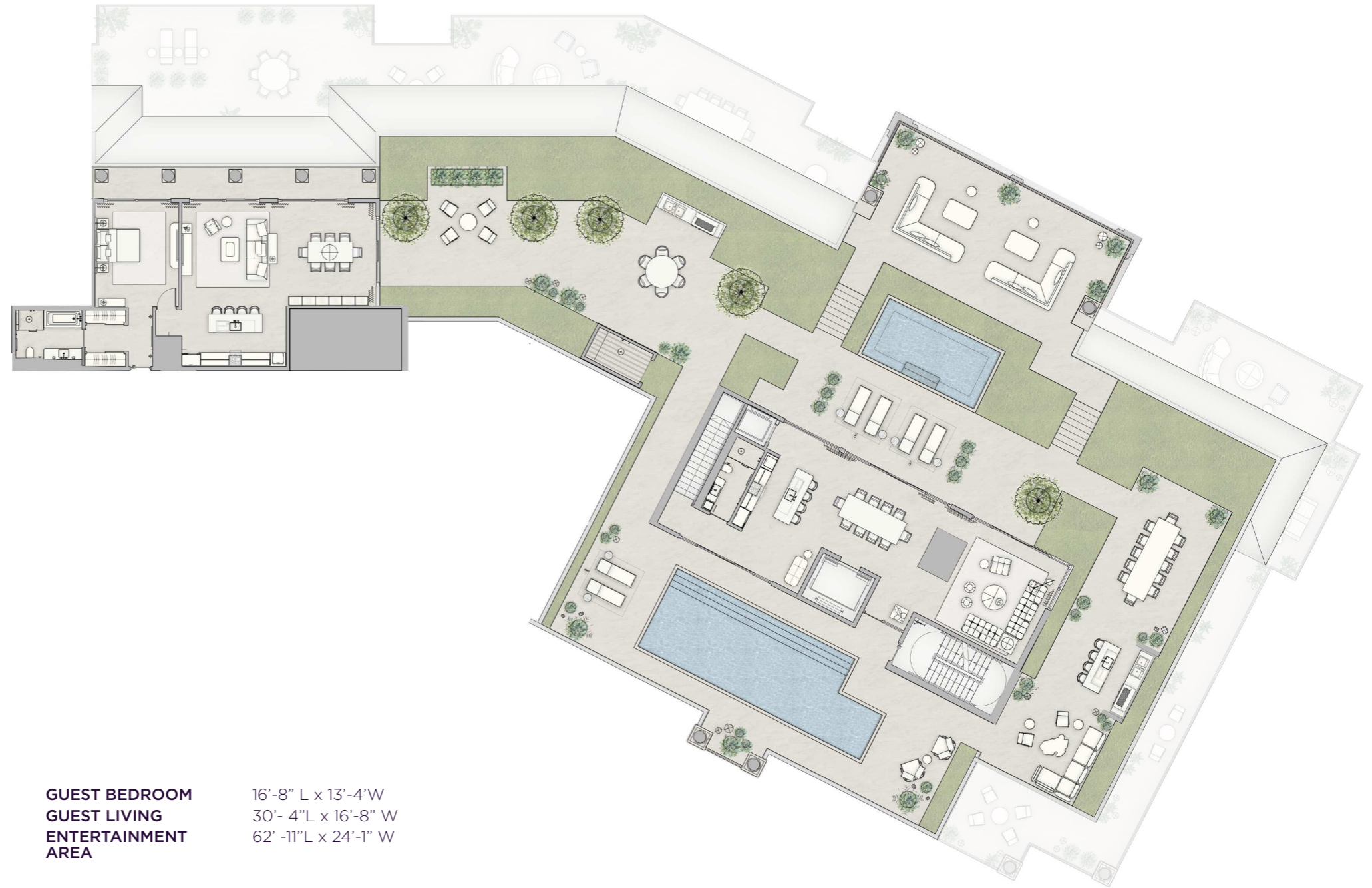
THEATER



THE RESIDENCES

SIX FISHER ISLAND

⑥



GUEST BEDROOM 16'-8" L x 13'-4" W
GUEST LIVING 30'-4" L x 16'-8" W
ENTERTAINMENT AREA 62'-11" L x 24'-1" W

The dimensions stated for this unit floor plan are approximate because there are various recognized methods for calculating the square footage of a unit. The square footage stated here is calculated from the exterior boundaries of the exterior walls to the centerline of interior demising walls without deductions for cutouts, curves, or architectural features. This method typically results in quoted dimensions greater than the dimensions that would be determined by using other accepted methods. The definition of "Unit" and the calculation method to be relied upon is set forth by the Developer in Developer's prospectus and the method set forth in the Developer's prospectus may result in a square footage calculation less than the method used here. Consult the Developer's prospectus to learn Unit dimensions and what is offered with the Unit. Dimensions and unit configuration is not guaranteed and may change during construction. Depictions of furnishings, fixtures and other items of personal property are not included with purchase.

N 25° 45.8255



*

W 80° 8.4428

PENTHOUSE 02

MAIN LEVEL

INTERIOR TOTAL
10,710 SF

INTERIOR MAIN LEVEL
9,810 SF

EXTERIOR TOTAL
7,220 SF

EXTERIOR MAIN LEVEL
3,450 SF

*

5 BEDROOMS

7.5 BATHROOMS

PRIVATE ROOFTOP POOL DECK

POOL HOUSE WITH FULL KITCHEN

SUMMER KITCHEN

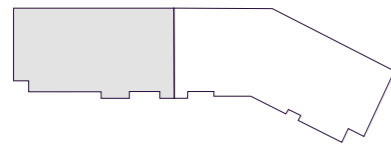
WINE ROOM

EXCERCISE ROOM

SERVICE SUITE

GAME ROOM

THEATER



THE RESIDENCES

SIX FISHER ISLAND

⑥



LIVING ROOM 44'-5" L x 22' W
BALCONY 156'-6" L x 20'-2" W
KITCHEN 20' -9" L x 15'-10" W
DINING ROOM 26'-1" L x 14'-5" W
CINEMA 23'-6" L x 15'-5" W
WINE ROOM 15'-10" L x 5'-5" W
GAME ROOM 16'-6" L x 11'-5" W
EXERCISE ROOM 22' L x 17'-5" W

PRIMARY BEDROOM 29'-2" L x 22' W
PRIMARY BATHROOM 37'-11" L x 10'-4" W
HER CLOSET 37'-11" L x 10'-4" W
HIS CLOSET 16'-6" L x 10' W

BEDROOM 2 25' L x 19'-5" W
BEDROOM 3 25'-8" L x 13'-1" W
BEDROOM 4 25'-8" L x 13'-1" W
BEDROOM 5 23'-1" L x 12'-3" W

The dimensions stated for this unit floor plan are approximate because there are various recognized methods for calculating the square footage of a unit. The square footage stated here is calculated from the exterior boundaries of the exterior walls to the centerline of interior demising walls without deductions for cutouts, curves, or architectural features. This method typically results in quoted dimensions greater than the dimensions that would be determined by using other accepted methods. The definition of "Unit" and the calculation method to be relied upon is set forth by the Developer in Developer's prospectus and the method set forth in the Developer's prospectus may result in a square footage calculation less than the method used here. Consult the Developer's prospectus to learn Unit dimensions and what is offered with the Unit. Dimensions and unit configuration is not guaranteed and may change during construction. Depictions of furnishings, fixtures and other items of personal property are not included with purchase.

N 25° 45.8255



*

W 80° 8.4428

PENTHOUSE 02

UPPER LEVEL

INTERIOR TOTAL
10,710 SF

INTERIOR UPPER LEVEL
900 SF

EXTERIOR TOTAL
7,220 SF

EXTERIOR UPPER LEVEL
3,770 SF

*

5 BEDROOMS

7.5 BATHROOMS

PRIVATE ROOFTOP POOL DECK

POOL HOUSE WITH FULL KITCHEN

SUMMER KITCHEN

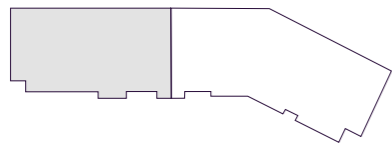
WINE ROOM

EXCERCISE ROOM

SERVICE SUITE

GAME ROOM

THEATER



THE RESIDENCES

SIX FISHER ISLAND

⑥

The dimensions stated for this unit floor plan are approximate because there are various recognized methods for calculating the square footage of a unit. The square footage stated here is calculated from the exterior boundaries of the exterior walls to the centerline of interior demising walls without deductions for cutouts, curves, or architectural features. This method typically results in quoted dimensions greater than the dimensions that would be determined by using other accepted methods. The definition of "Unit" and the calculation method to be relied upon is set forth by the Developer in Developer's prospectus and the method set forth in the Developer's prospectus may result in a square footage calculation less than the method used here. Consult the Developer's prospectus to learn Unit dimensions and what is offered with the Unit. Dimensions and unit configuration is not guaranteed and may change during construction. Depictions of furnishings, fixtures and other items of personal property are not included with purchase.



**GUEST SUITE
ENTERTAINMENT
AREA**

39'-4" L x 27'-6" W
43' L x 15'-8" W

N 25° 45.8255



W 80° 8.4428